

# Understanding the engineering services we offer at RVA Group

Supporting clients throughout the full asset lifecycle



## Foreword

---

Nobody knows an asset better than the people who own, operate, and maintain it on a day-to-day basis. However, preparing plants, buildings and structures for their eventual decommissioning requires a very precise set of decontamination, demolition, and dismantling skills. RVA's engineers and consultants therefore support clients, globally, throughout the entire lifespan of their assets.

Drawing upon years of specialist engineering experience, sector knowledge and unbiased commercial awareness, RVA offers a wide range of services from which clients can select, develop, and implement bespoke strategies, tailored to deliver the optimum solutions for their projects.

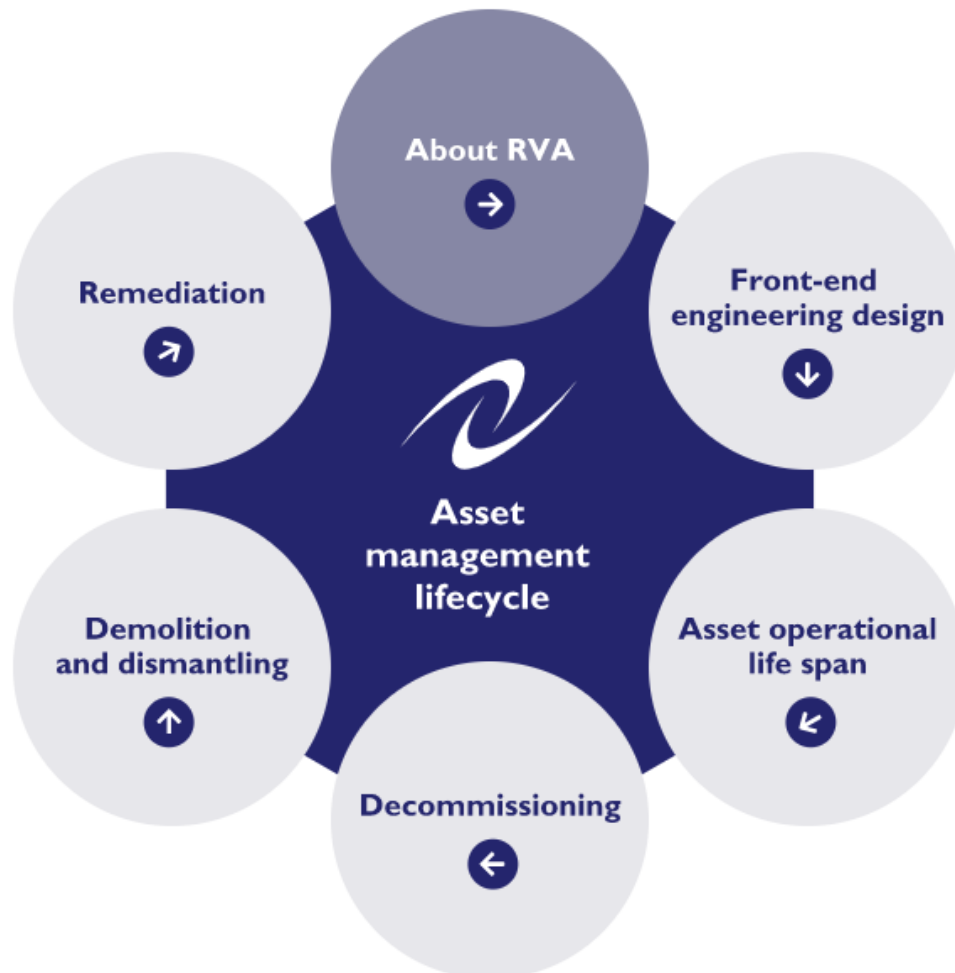
With no two projects ever the same, some organisations choose to approach RVA for support with key asset lifecycle milestones only, for example. Others prefer to enlist RVA's project management and technical expertise from the earliest possible opportunity – sometimes even before an asset has even been constructed.

Either way, all our decommissioning services are available individually, and will be tailored to the requirements of each unique assignment, whether you're looking for an initial asset retirement strategy, or a comprehensive principal designer package.



## Supporting clients throughout the lifecycle of their assets

---



As with most undertakings, the quality of inputs in the earliest stages of a decommissioning project will usually dictate the level of success that can be achieved.

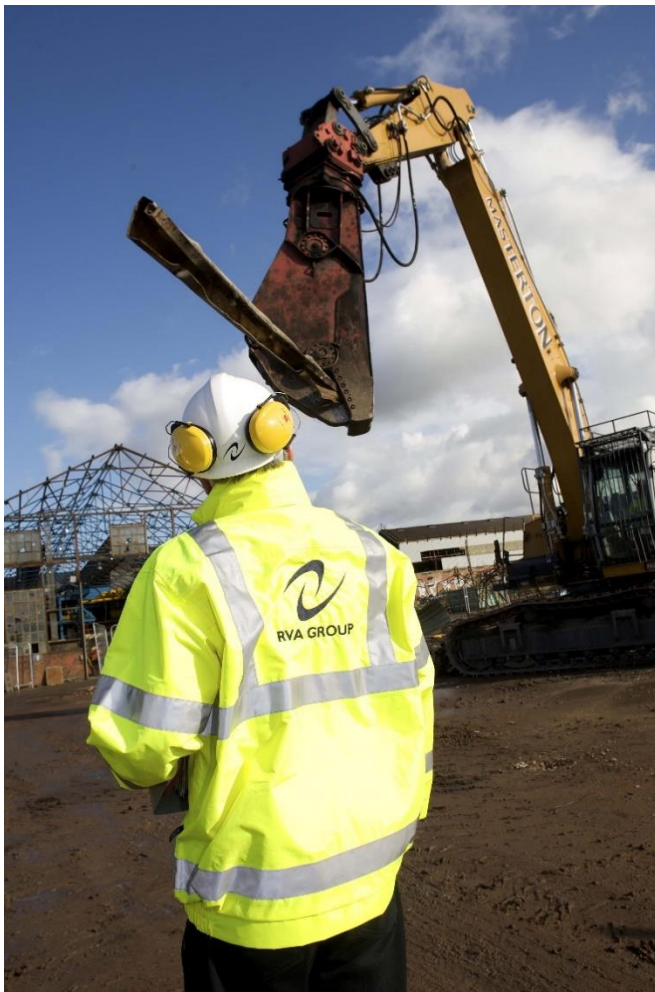
**RVA Group** therefore recognises that detailed research, planning and the bringing together of competent resources, are all factors that will impact on the eventual project outcome. Our front-end engineering services are therefore the foundation stones on which safe and secure projects are built.

## RVA's front-end engineering services

---

The provision of our front-end engineering services varies from one client to the next. However, the core scope of such work typically involves:

- Acting as professional engineers and technical advisers
- Methodology design statutory duty holder
- Decommissioning and demolition cost assessments and financial provisioning
- Structural assessments and surveys for dismantling and demolition



## Professional engineers and technical advisers

---

We work exclusively for site owners and operators, completely independently of the supply chain. This means that our professional engineering expertise can be wholly relied upon, whether clients have a single technical query or require extensive advice to support the robust execution of any future decommissioning works.

Unlike a client's own in-house resource, we always approach projects with a decommissioning-first mindset, which means we strive to complement the skills and knowledge of existing personnel, to help deliver safe, commercially secure, and environmentally sound outcomes, however straightforward or complex the brief.



## Methodology design statutory duty holder

---

When designing decommissioning and demolition methodology, it is the statutory duty holder's role to help manage safety standards on these potentially high-hazard assignments. We analyse varied risks – relating to the industrial background of the site, the operational status of plant and the decommissioning discipline itself – often with the input of a client's personnel. The objective is to then understand how they interact with one another, so that direction can be provided to help mitigate the danger they pose.

Often a legal requirement, governed by rules such as the European Directive 92/57/EEC or the Construction Design Management (CDM) regulations in the UK, the appointment of a statutory duty holder also ensures the integrity of good practice and project management structure at every stage. RVA adopts this role for the majority of clients, irrespective of the jurisdiction they operate within.

## Decommissioning and demolition cost assessments

---

It usually helps to have a decommissioning project cost indication as soon as possible. This information can then be used to compile sanction grade estimates, funding applications and even determine the project programme and duration – not to mention financial milestones to support ongoing cost control when works are underway.

When undertaking these evidenced cost assessments, direct costs such as contractor fees will be evaluated alongside wider factors including the potential plant resale value, market conditions and the possible effect of legislative changes, for example.

## Structural assessments and surveys for demolition and dismantling

---

These thorough assessments typically investigate the condition and integrity of site assets before providing technical advice and costings for the decommissioning, demolition and dismantling that may follow.

The outcomes of these surveys often help to determine the drivers, timescales and urgency of onward project roadmaps, based on evidenced findings as opposed to presumptions.

## Knowledge spotlight: The role of a costings study in decommissioning

---

It is often considered one of the least ‘hands on’ elements of a decommissioning project, but the execution of a costings study is in fact one of the most crucial and sophisticated uses of engineering acumen, when it comes to securing a safe, commercially and environmentally-sound project outcome. RVA Group was interviewed by technical journal – Tanks and Terminals magazine – on this very topic.

Scan to read the full article...



## Working with clients, globally

---

The world of decommissioning can be highly complex and extremely hazardous. Having worked in this specialist discipline since 1992, RVA Group is an experienced and globally renowned management and engineering consultancy, providing total lifecycle solutions for the safe, environmentally secure, and cost-effective delivery of complex projects.

Having successfully completed over 850 international assignments – and counting – our knowledge-based support has been relied upon by major global brands in the power generation, chemical, petrochemical, and pharmaceutical industries.

 **BASF**

**GSK**



**VENATOR**

GLENCORE



**INEOS**

**sabie**

**ConocoPhillips**

## Flexible support, to suit you

---

When it comes to our provision of decommissioning services, we can adopt varied deployment methods, including a physical on-site presence, virtual support, or, as in most cases, a combined approach. Exactly what is feasible will depend on the scope of work involved, and decisions will always be made on the grounds of safety. However, where possible we can actively seek to make best use of technology and remote or geographically diverse resources, to reduce the unnecessary carbon impact of travel, and keep programmes progressing fluidly whatever else may be going on in the world.

To discuss the content of this PDF, or your project requirements however large or small, please don't hesitate to contact RVA Group for more information.



+44 208 387 1323



[info@rvagroup.org](mailto:info@rvagroup.org)



[www.rvagroup.org](http://www.rvagroup.org)

Find us on



[@RVA Group - global decommissioning](https://www.linkedin.com/company/rva-group)

Download more technical detail  
about RVA's front-end engineering  
services:

